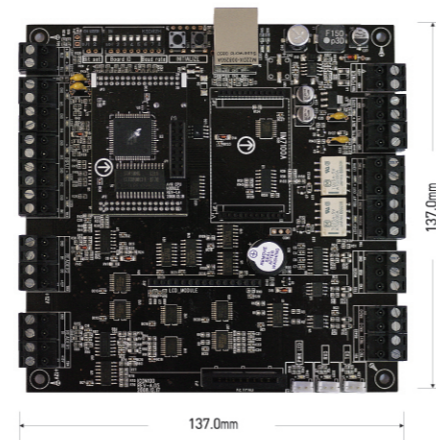


SSA-P102

INTELLIGENT SINGLE DOOR ACCESS CONTROL PANEL



KEY Features

- Intelligent Single Door Access Control Panel
- Dynamic Control of Memory up to 50,000 Users / up to 50,000 Event Buffers
- Standalone / Network Communication via RS232 / RS422 / RS485, TCP/IP (SSA-P102T)
- Independent 5 Inputs and 4 Outputs including 2ea of 2 Form-C Relay Outputs
- Reader Port for Anti-Passback Function : 2ea (26 / 34bit Wiegand(selectable), 4 / 8bit Burst for PIN)
- Remain ID & Event Data and Setting Value in case of Electric Outage
- Duress Mode Function
- Alarm Event Monitoring using Tamper Switch
- Communication Status via LED Indicator

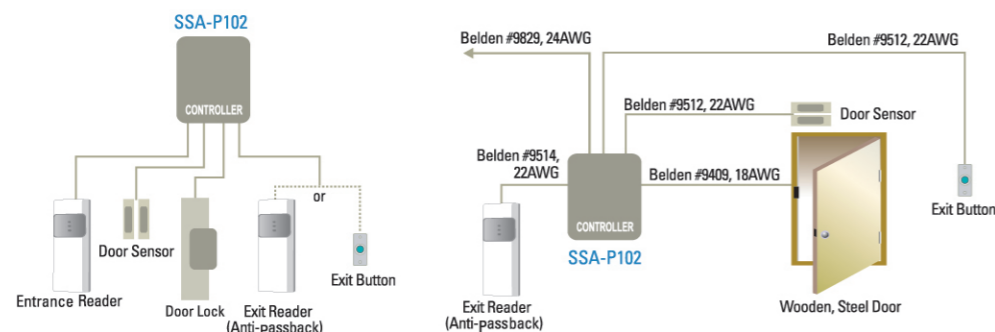
TIME SCHEDULES

- TIME CODE : 10
- TIME INTERVAL : 5
- HOLIDAY CODE : 10
- HOLIDAY : 32

Specifications

Model	SSA-P102	SSA-P102T
Users	10,000 - 50,000 Users (Default: 10,000)	
Event Buffer	50,000 - 100,000(Default: 50,000)	
Power / Current	DC 12V / Max.120mA	DC 12V / MAX.170mA
Reader Port	2ea : 26bit/ 34bit Wiegand(Selectable), 4 / 8bit Burst for PIN	
Door Open Time	00-99 Sec. (Default 3Sec.)	
Communication	RS232 / RS422 / RS485	RS232 / RS422 / RS485 / TCP/IP
Baud Rate(bps)	4800/ 9,600/ 19,200/ 38,400/ 57,600(default)/ 115,200(selectable)	
Input Port	5ea : Exit Button, Door Sensor, Aux#1,#2, #3	
Output Port	2ea : 2 FORM-C Relay Output (COM, NO, NC) / DC12V-18V, Rating Max.2A 2ea: TTL Output / DC5V, Rating Max.20mA	
LED Indicator	16 LED Indicators (Red, Blue and Yellow)	
Beeper	Piezo Buzzer	
Operating Temperature	0°C to +50°C	
Operating Humidity	10% to 90% relative humidity non-condensing	
Color / Material	Black/ PCB	
Dimension (W x H x D)	137 x 137 x 18 mm	
Weight	160g	170g

Standalone Configuration



Network Configuration

