

Welcome

Thank you for purchasing our K6 series home use IP camera!
 This quick start guide is designed to be a reference tool for your system.
 Please keep this start guide well for future reference.
 Please open the accessory bag to check the items one by one in accordance with the list below.
 Contact your local retailer ASAP if something is missing or damaged in the bag.

Before your operation please read the following instructions carefully.

- **Installation environment**
 - All installation and operation here should conform to your local electrical safety codes.
 - Keep away from extreme hot places and sources;
 - Avoid direct sunlight;
 - Keep away from extreme humid places;
- **Accessories**
 Check the following accessories after opening the box;
- Please refer to the packing list in the box

Name	Amount
IPC	1
IPC universal holder	1
MD9M data converter cable	Optional
Power adapter	1
Quick Start Guide	1
CD	1

Important

We assume no liability or responsibility for all the fires or electrical shock caused by improper handling or installation.

We are not liable for any problems caused by unauthorized modifications or attempted repair.

Table of Contents

1 General Introduction.....	3
1.1 Front Panel.....	3
1.2 Side Panel.....	4
1.3 Bottom Panel.....	4
1.4 I/O Port cable.....	5
2 Installation Procedure.....	6
2.1 Without the Universal Holder.....	6
2.2 With the Universal Holder.....	6
2.2.1 On the Table.....	6
2.2.2 In the Wall or Ceiling.....	7
3 Quick Configuration Tool.....	8
3.1 Overview.....	8
3.2 Operation.....	8
4 Web Operation.....	11
4.1 Network Connection.....	11
4.2 Login and Main Interface.....	11
Appendix Toxic or Hazardous Materials or Elements.....	14

1 General Introduction

1.1 Front Panel

You can refer to the following figure for IP camera front panel information. See Figure 1-1.

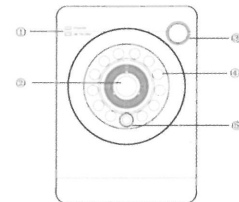


Figure 1-1

Please refer to the following sheet for detailed information.

Port	Port Name	Function
Port 1	POWER	Power indication light. When system is recording, the green light flashes. The interval is 0.5s. When system is running: The red light becomes on when system boots up. When system is running properly, the green light becomes on. When system is upgrading, the red light flashes. The interval is 0.5s.
	NETWORK	Network indication light. The yellow light flashes when network connection is proper.
Port 2	/	Device lens.
Port 3	PIR receiver enclosure	Passive IR motion detect port. It can detect the object of the IR radiant (such as the human body or other heating object.)
Port 4	IR light	It is to send out the IR compensation light to enhance the night vision effect.
Port 5	photosensitive resistance	It is to sense the environment illumination to open/close the IR light.

1.2 Side Panel

This series IPC side panel is shown as in Figure 1-2 .

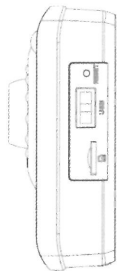


Figure 1-2

Please refer to the following sheet for detailed information.

Port Name	Function
SD card port	Micro SD card port. You can insert the SD card.
USB port	USB Port. You can connect to the WIFI module or 3G module.
RESET	Press it for at least 5 seconds and then release, you can reboot the device.

1.3 Bottom Panel

This series IPC bottom panel is shown as below. See Figure 1-3 .

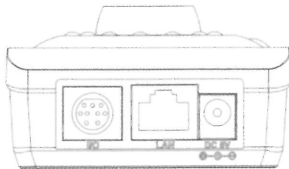


Figure 1-3

Please refer to the following sheet for detailed information.

Port Name	Function
I/O Port	I/O port, connect to MD9M data converter cable
LAN	10M/100M self-adaptive Ethernet port. Connect to the network cable.
DC 5V	Power input port. Input DC 5V.

1.4 I/O Port cable

The input output port cable is shown as below. See Figure 1-4 .

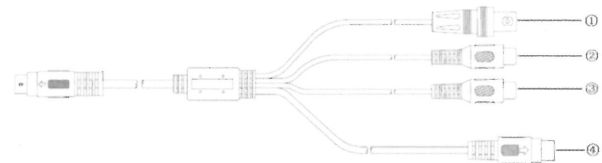


Figure 1-4

Please refer to the following sheet for detailed information.

Port Name	Function
Port 1	Video output port, BNC port. It is to output analog video signal. You can connect to the devices such as monitor or network video server, digital video recorder.
Port 2	Audio input ports, RCA port. It is to input audio signal. It is to receive the analog audio from devices such as the pickup.
Port 3	Audio output port, RCA port. It is to output the audio signal to the devices such as the sound box.
Port 4	Connect to the wireless alarm box.

2 Installation Procedure

This series IP camera can be placed on the table directly, or use the universal holder to install in the wall or ceiling. You can refer to the steps listed below:

2.1 Without the Universal Holder

You can place the IPC on the table directly if there is no universal holder. Please make sure the IPC is placed horizontally. See Figure 2-1 .



Figure 2-1

2.2 With the Universal Holder

2.2.1 On the Table

Place the gasket in the universal holder and then place the one end of the holder to the screw hole in the real panel of the device. See Figure 2-2 .

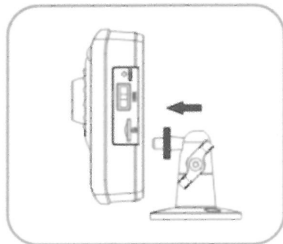


Figure 2-2

Turn the universal holder clockwise to fix the device firmly. See Figure 2-3.

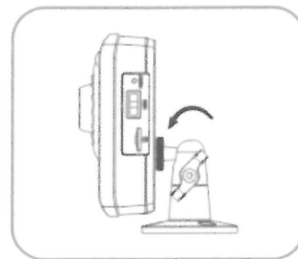


Figure 2-3

Now you can place the universal holder on the table horizontally and then turn the knob to adjust the IP camera to the suitable angle.

2.2.2 In the Wall or Ceiling

Dig three holes in the wall (or in the ceiling) in accordance with the holes of the universal holder. See Figure 2-4 .

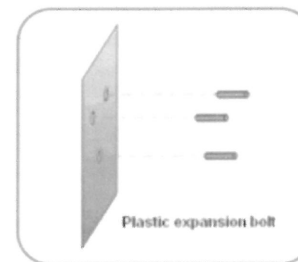


Figure 2-4

Insert the three screws of the universal holder to the holes you just dug, and then fix the screws firmly.

Finally turn the knob to adjust the IP camera to the suitable angle.

3

Quick Configuration Tool

3.1 Overview

Quick configuration tool can search current IP address, modify IP address. At the same time, you can use it to upgrade the device. Please note the tool only applies to the IP addresses in the same segment.

3.2 Operation

Double click the "ConfigTools.exe" icon, you can see an interface is shown as in Figure 3-1. In the device list interface, you can view device IP address, port number, subnet mask, default gateway, MAC address and etc.

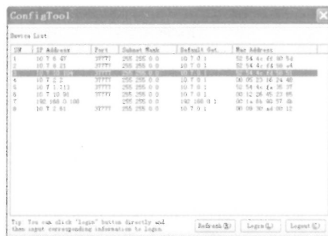


Figure 3-1

Select one IP address and then right click mouse, you can see an interface is shown as in Figure 3-2.

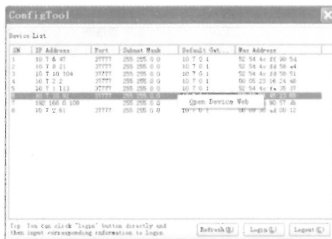


Figure 3-2

Select the "Open Device Web" item; you can go to the corresponding web login interface. See Figure 3-3.



Figure 3-3

If you want to modify the device IP address without logging in the device web interface, you can go to the configuration tool main interface to set. In the configuration tool search interface (Figure 3-1), please select a device IP address and then double click it to open the login interface. Or you can select an IP address and then click the Login button to go to the login interface. See Figure 3-4.

In Figure 3-4, you can view device IP address, user name, password and port. Please modify the corresponding information to login. Please note the port information here shall be identical with the port value you set in TCP port in Web Network interface. Otherwise, you can not login the device. If you are use device background upgrade port 3800 to login, other setups are all invalid.



Figure 3-4

After you logged in, the configuration tool main interface is shown as below. See Figure 3-5.



Figure 3-5

For detailed information and operation instruction of the quick configuration tool, please refer to the Quick Configuration Tool User's Manual included in the resources CD.

4

Web Operation

This series IPC product support the Web access and management via PC. Web includes several modules: monitor channel list, record search, alarm setup, system configuration, PTZ control, monitor window and etc. IP camera factory default setup:

- IP address: 192.168.1.108.
- User name: admin
- Password: admin

4.1 Network Connection

Please follow the steps listed below for network connection.

- Make sure the IPC has connected to the network properly.
- IPC IP address and PC IP address shall be in the same network segment. IPC default IP address is 192.168.1.108. If there is router, please set the corresponding gateway and subnet mask.
- Use order ping ***.***.***.***(* IP camera address) to check connection is OK or not.

4.2 Login and Main Interface

Open IE and input IP camera address in the address bar.

For example, if your camera IP is 192.168.1.108, then please input http:// 192.168.1.108 in IE address bar. See Figure 4-1.



Figure 4-1

System pops up warning information to ask you whether install control webrec. cab or not. Please click OK button, system can automatically install the control. When system is upgrading, it can overwrite the previous Web too. If you can't download the ActiveX file, please check whether you have installed the plug-in to disable the control download. Or you can lower the IE security level. See Figure 4-2.

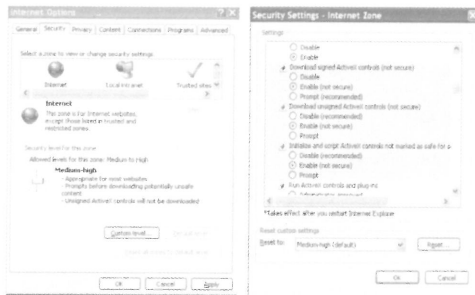


Figure 4-2

After installation, the interface is shown as below. See Figure 4-3.

Please input your user name and password.

Default factory name is admin and password is admin.

Note: For security reasons, please modify your password after you first login.

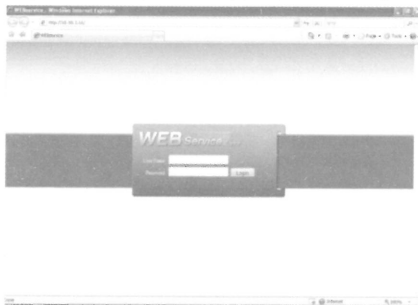


Figure 4-3

After you logged in, you can see the main window. See Figure 4-4 .

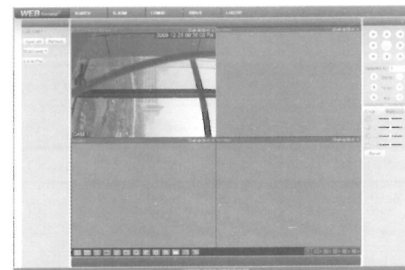


Figure 4-4

Please refer to the Web Operation Manual included in the resource CD for detailed operation instruction.